



## Chestfield, Whitstable

£635,000 Freehold

...for Coastal, Country & City living.



Zoopla  
Smarter property search

rightmove

PrimeLocation.com

• 95/97 Tankerton Road . Whitstable . Kent CT5 2AJ . t: 01227 266441 . f: 01227 266443

e: sales@christopherhodgson.co.uk, lettings@christopherhodgson.co.uk . [www.christopherhodgson.co.uk](http://www.christopherhodgson.co.uk)

Estate agency services are provided by Christopher Hodgson Limited, a company incorporated and registered in England and Wales with the number 07108955 whose registered office address is at Camburgh House, 27 New Dover Road, Canterbury, Kent CT1 3DN. Lettings and valuations are provided by Christopher Hodgson and Helen Hodgson trading as Christopher Hodgson.

# Chestfield, Whitstable

103 Maydowns Road, Chestfield, Whitstable, Kent, CT5 3LW

A deceptively spacious detached chalet bungalow ideally situated towards the end of a private no-through road, in an elevated position with distant views towards the sea. The property is within close proximity of Chestfield golf course, the historic 14th Century Chestfield Barn housing a pub and restaurant, Chestfield medical centre, supermarkets, bus routes and Chestfield and Swalecliffe station (0.6 miles).

The spacious and smartly presented accommodation is arranged on the ground floor to provide an entrance hall, sitting room with wood burning stove, dining room, contemporary kitchen, utility room, conservatory, two bedrooms and two bathrooms (one en-suite). To the first floor there is a generous double bedroom with en-suite bathroom and a study area.

The bungalow occupies a generous plot, with the rear garden extending to 136ft x 40ft (41m x 12m) with stone and decked terraces, vegetable plots, a greenhouse, summer house and workshop. A driveway to the front of the property provides off road parking for a number of vehicles and access to the attached integral garage.



## Location

Maydowns Road is a desirable location in the favoured village of Chestfield and is well served by Chestfield and Whitstable railway stations offering fast and frequent services to London Victoria (94 mins from Chestfield / 80 mins from Whitstable) and high speed links to London St Pancras (78 mins from Chestfield / 73 mins from Whitstable). Chestfield Medical Centre, Sainsbury's Supermarket and a bus route are also easily accessible. The property is 1 mile distant from the 18 hole golf course, club house and 14th Century barn housing a pub and restaurant. Chestfield is situated between the seaside town of Whitstable, renowned for its watersports facilities and well regarded restaurants and the Cathedral city of Canterbury (6.5 miles distant) which enjoys a number of public schools, state schools and higher educational facilities as well as a wealth of cultural and leisure amenities including theatres, bars and restaurants and a major shopping centre enjoying a range of mainstream retail outlets as well as many individual shops. The A299 is also easily accessible linking with the A2/ M2 providing access to the channel ports and subsequent motorway network.

## Accommodation

The accommodation and approximate measurements are:

### GROUND FLOOR

#### • Entrance Hall

• **Sitting Room**  
20'0" x 13'3" (6.10m x 4.05m)  
at maximum points.

• **Dining Room**  
15'11" x 10'3" (4.85m x 3.12m)  
at maximum points.

• **Conservatory**  
14'6" x 10'3" (4.42m x 3.12m)  
at maximum points.

• **Kitchen**  
13'7" x 8'6" (4.15m x 2.60m)  
at maximum points.

• **Utility Room**  
10'8" x 7'8" (3.24m x 2.34m)  
at maximum points.

• **Bedroom 2**  
10'6" x 10'7" (3.21m x 3.22m)  
at maximum points.



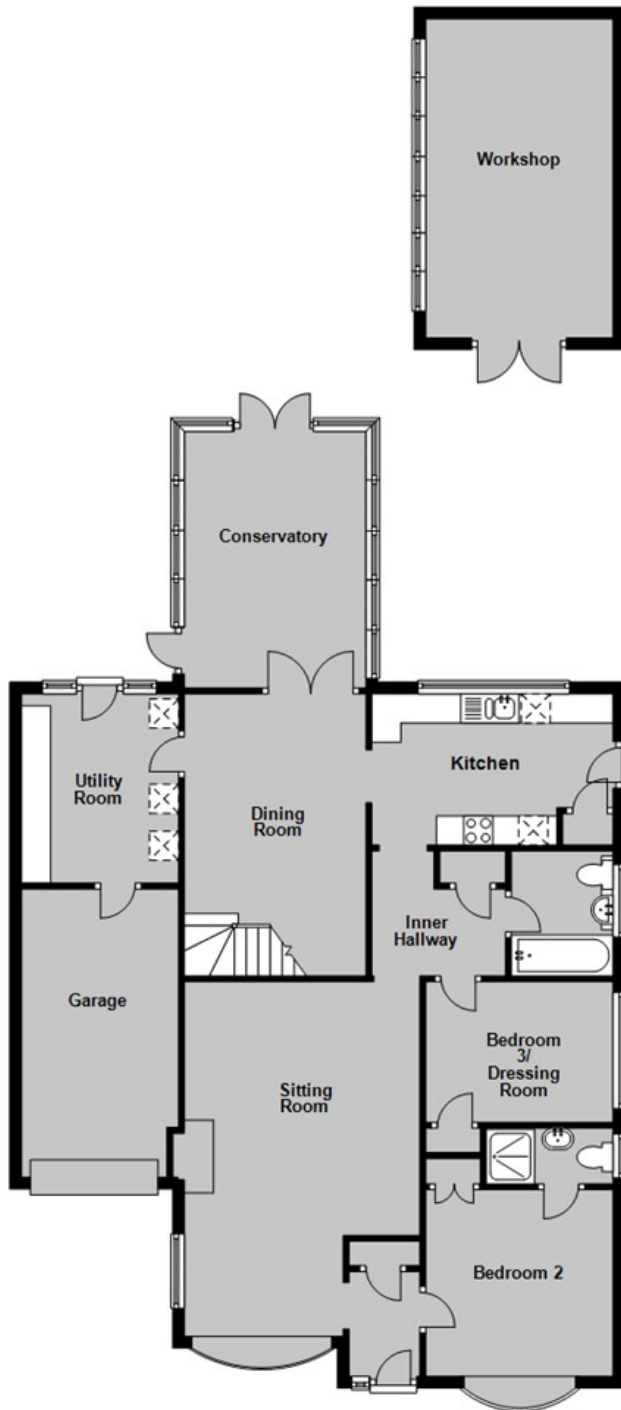
- **En-Suite Shower Room**  
7'1" x 3'1" (2.18m x 0.96m)  
at maximum points.
  - **Bedroom 3/ Dressing Room**  
10'6" x 7'11" (3.22m x 2.42m)  
at maximum points.
  - **Bathroom**  
7'0" x 5'8" (2.15m x 1.75m)  
at maximum points.
- FIRST FLOOR**
- **Bedroom 1**  
20'2" x 12'6" (6.15m x 3.80m)  
at maximum points.
  - **En-Suite Bathroom**  
8'7" x 7'1" (2.62m x 2.17m)  
at maximum points.

- OUTSIDE**
- **Integral Garage**  
16'3" x 8'10" (4.95m x 2.69m)  
at maximum points.
  - **Garden**  
136" x 40" (41.45m x 12.19m )  
at maximum points.
  - **Workshop**  
18'0" x 10'0" (5.49m x 3.05m)  
at maximum points.
- Video Tour**  
Please view the video tour for this property, and contact us to discuss arranging a viewing.

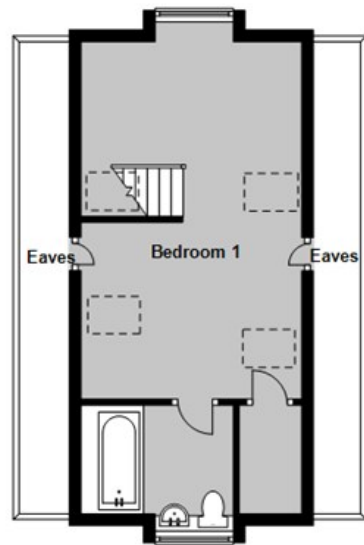




**Ground Floor**  
Approx. 121.2 sq. metres (1304.8 sq. feet)



**First Floor**  
Approx. 31.7 sq. metres (340.9 sq. feet)



Total area: approx. 152.9 sq. metres (1645.7 sq. feet)

**Council Tax Band E.** The amount payable under tax band E for the year 2023/2024 is £2,614.45.

**Viewing: STRICTLY BY APPOINTMENT WITH AGENTS . t: 01227 266441**

Christopher Hodgson Estate Agents for itself and as for the vendor or lessor (as appropriate) gives notice that: 1 These particulars are only a general outline for the guidance of intending purchasers or lessees and do not constitute in whole or in part an offer or a Contract. 2 Reasonable endeavours have been made to ensure that the information given in these particulars is materially correct but any intending purchaser or lessee should satisfy themselves by inspection, searches, enquiries and survey as to the correctness of each statement. 3 All statements in these particulars are made without responsibility on the part of Christopher Hodgson Estate Agents or the vendor or lessor. 4 No statement in these particulars is to be relied upon as a statement or representation of fact. 5 Neither Christopher Hodgson Estate Agents nor anyone in its employment or acting on its behalf has authority to make any representation or warranty in relation to this property. 6 Nothing in these particulars shall be deemed to be a statement that the property is in good repair or condition or otherwise nor that any services or facilities are in good working order. 7 Photographs may show only certain parts and aspects of the property at the time when the photographs were taken and you should rely upon actual inspection. 8 No assumption should be made in respect of parts of the property not shown in photographs. 9 Any areas, measurements or distances are only approximate. 10 Any reference to alterations or use is not intended to be a statement that any necessary planning, building regulation, listed building or any other consent has been obtained. 11 Amounts quoted are exclusive of VAT if applicable. 12 Whilst reasonable endeavours have been made to ensure the accuracy of any floor plan contained in these particulars, all measurements and areas are approximate and no responsibility is taken for any error, omission or mis-statement. This plan is for illustrative purposes only and should be used as such by any prospective purchaser. 13 Any mapping contained within these particulars is for illustrative purposes only and should be used as such by any prospective purchaser. No responsibility is taken for any error, omission or mis-statement. 14 Any computer generated images contained within these particulars are for illustrative purposes only and should be used as such by any prospective purchaser.

Energy Efficiency Rating	
Current Rating	Potential Rating
A	B
B	C
C	D
D	E
E	F
F	G
G	H
H	I
I	J
J	K
K	L
L	M
M	N
N	O
O	P
P	Q
Q	R
R	S
S	T
T	U
U	V
V	W
W	X
X	Y
Y	Z
Z	AA
AA	AB
AB	AC
AC	AD
AD	AE
AE	AF
AF	AG
AG	AH
AH	AI
AI	AJ
AJ	AK
AK	AL
AL	AM
AM	AN
AN	AO
AO	AP
AP	AQ
AQ	AR
AR	AS
AS	AT
AT	AU
AU	AV
AV	AW
AW	AX
AX	AY
AY	AZ
AZ	BA
BA	BB
BB	BC
BC	BD
BD	BE
BE	BF
BF	BG
BG	BH
BH	BI
BI	BJ
BJ	BK
BK	BL
BL	BM
BM	BN
BN	BO
BO	BP
BP	BQ
BQ	BR
BR	BS
BS	BT
BT	BU
BU	BV
BV	BW
BW	BX
BX	BY
BY	BZ
BZ	CA
CA	CB
CB	CC
CC	CD
CD	CE
CE	CF
CF	CG
CG	CH
CH	CI
CI	CJ
CJ	CK
CK	CL
CL	CM
CM	CN
CN	CO
CO	CP
CP	CQ
CQ	CR
CR	CS
CS	CT
CT	CU
CU	CV
CV	CW
CW	CX
CX	CY
CY	CZ
CZ	DA
DA	DB
DB	DC
DC	DD
DD	DE
DE	DF
DF	DG
DG	DH
DH	DI
DI	DJ
DJ	DK
DK	DL
DL	DM
DM	DN
DN	DO
DO	DP
DP	DQ
DQ	DR
DR	DS
DS	DT
DT	DU
DU	DV
DV	DW
DW	DX
DX	DY
DY	DZ
DZ	EA
EA	EB
EB	EC
EC	ED
ED	EE
EE	EF
EF	EG
EG	EH
EH	EI
EI	EJ
EJ	EK
EK	EL
EL	EM
EM	EN
EN	EO
EO	EP
EP	EQ
EQ	ER
ER	ES
ES	ET
ET	EU
EU	EV
EV	EW
EW	EX
EX	EY
EY	EZ
EZ	FA
FA	FB
FB	FC
FC	FD
FD	FE
FE	FF
FF	FG
FG	FH
FH	FI
FI	FJ
FJ	FK
FK	FL
FL	FM
FM	FN
FN	FO
FO	FP
FP	FQ
FQ	FR
FR	FS
FS	FT
FT	FU
FU	FV
FV	FW
FW	FX
FX	FY
FY	FZ
FZ	GA
GA	GB
GB	GC
GC	GD
GD	GE
GE	GF
GF	GG
GG	GH
GH	GI
GI	GJ
GJ	GK
GK	GL
GL	GM
GM	GN
GN	GO
GO	GP
GP	GQ
GQ	GR
GR	GS
GS	GT
GT	GU
GU	GV
GV	GW
GW	GX
GX	GY
GY	GA
GA	GB
GB	GC
GC	GD
GD	GE
GE	GF
GF	GG
GG	GH
GH	GI
GI	GJ
GJ	GK
GK	GL
GL	GM
GM	GN
GN	GO
GO	GP
GP	GQ
GQ	GR
GR	GS
GS	GT
GT	GU
GU	GV
GV	GW
GW	GX
GX	GY
GY	GA
GA	GB
GB	GC
GC	GD
GD	GE
GE	GF
GF	GG
GG	GH
GH	GI
GI	GJ
GJ	GK
GK	GL
GL	GM
GM	GN
GN	GO
GO	GP
GP	GQ
GQ	GR
GR	GS
GS	GT
GT	GU
GU	GV
GV	GW
GW	GX
GX	GY
GY	GA
GA	GB
GB	GC
GC	GD
GD	GE
GE	GF
GF	GG
GG	GH
GH	GI
GI	GJ
GJ	GK
GK	GL
GL	GM
GM	GN
GN	GO
GO	GP
GP	GQ
GQ	GR
GR	GS
GS	GT
GT	GU
GU	GV
GV	GW
GW	GX
GX	GY
GY	GA
GA	GB
GB	GC
GC	GD
GD	GE
GE	GF
GF	GG
GG	GH
GH	GI
GI	GJ
GJ	GK
GK	GL
GL	GM
GM	GN
GN	GO
GO	GP
GP	GQ
GQ	GR
GR	GS
GS	GT
GT	GU
GU	GV
GV	GW
GW	GX
GX	GY
GY	GA
GA	GB
GB	GC
GC	GD
GD	GE
GE	GF
GF	GG
GG	GH
GH	GI
GI	GJ
GJ	GK
GK	GL
GL	GM
GM	GN
GN	GO
GO	GP
GP	GQ
GQ	GR
GR	GS
GS	GT
GT	GU
GU	GV
GV	GW
GW	GX
GX	GY
GY	GA
GA	GB
GB	GC
GC	GD
GD	GE
GE	GF
GF	GG
GG	GH
GH	GI
GI	GJ
GJ	GK
GK	GL
GL	GM
GM	GN
GN	GO
GO	GP
GP	GQ
GQ	GR
GR	GS
GS	GT
GT	GU
GU	GV
GV	GW
GW	GX
GX	GY
GY	GA
GA	GB
GB	GC
GC	GD
GD	GE
GE	GF
GF	GG
GG	GH
GH	GI
GI	GJ
GJ	GK
GK	GL
GL	GM
GM	GN
GN	GO
GO	GP
GP	GQ
GQ	GR
GR	GS
GS	GT
GT	GU
GU	GV
GV	GW
GW	GX
GX	GY
GY	GA
GA	GB
GB	GC
GC	GD
GD	GE
GE	GF
GF	GG
GG	GH
GH	GI
GI	GJ
GJ	GK
GK	GL
GL	GM
GM	GN
GN	GO
GO	GP
GP	GQ
GQ	GR
GR	GS
GS	GT
GT	GU
GU	GV
GV	GW
GW	GX
GX	GY
GY	GA
GA	GB
GB	GC
GC	GD
GD	GE
GE	GF
GF	GG
GG	GH
GH	GI
GI	GJ
GJ	GK
GK	GL
GL	GM
GM	GN
GN	GO
GO	GP
GP	GQ
GQ	GR
GR	GS
GS	GT
GT	GU
GU	GV
GV	GW
GW	GX
GX	GY
GY	GA
GA	GB
GB	GC
GC	GD
GD	GE
GE	GF
GF	GG
GG	GH
GH	GI
GI	GJ
GJ	GK
GK	GL
GL	GM
GM	GN
GN	GO
GO	GP
GP	GQ
GQ	GR
GR	GS
GS	GT
GT	GU
GU	GV
GV	GW
GW	GX
GX	GY
GY	GA
GA	GB
GB	GC
GC	GD
GD	GE
GE	GF
GF	GG
GG	GH
GH	GI
GI	GJ
GJ	GK
GK	GL
GL	GM
GM	GN
GN	GO
GO	GP
GP	GQ
GQ	GR
GR	GS
GS	GT
GT	GU
GU	GV
GV	GW
GW	GX
GX	GY
GY	GA
GA	GB
GB	GC
GC	GD
GD	GE
GE	GF
GF	GG
GG	GH
GH	GI
GI	GJ
GJ	GK
GK	GL
GL	GM
GM	GN
GN	GO
GO	GP
GP	GQ
GQ	GR
GR	GS
GS	GT
GT	GU
GU	GV
GV	GW
GW	GX
GX	GY
GY	GA
GA	GB
GB	GC
GC	GD
GD	GE
GE	GF
GF	GG
GG	GH
GH	GI
GI	GJ
GJ	GK
GK	GL
GL	GM
GM	GN
GN	GO
GO	GP
GP	GQ
GQ	GR
GR	GS
GS	GT
GT	GU
GU	GV
GV	GW
GW	GX
GX	GY
GY	GA